



TO : Lenovo

DATE : Feb. 20. 2012

**SAMSUNG TFT-LCD****MODEL NO. : LTN140AT26-L01**

NOTE : Extension code [ -L01 ]  
→ LTN140AT26-L01  
- Surface type [ **Glare** ]

*The information described in this SPEC is preliminary and can be changed without prior notice.*

APPROVED BY :

*Michael Kim*

PREPARED BY :

*June Oh*

**Application Engineering Group, LCD Division  
Samsung Electronics Co., Ltd.**

**Samsung Secret**

## GENERAL DESCRIPTION

### DESCRIPTION

LTN140AT26-L is a color active matrix TFT (Thin Film Transistor) liquid crystal display (LCD) that uses amorphous silicon TFT as a switching devices. This model is composed of a TFT LCD panel, a driver circuit and a backlight unit. The resolution of a 14.0" contains 1,366 x 768 pixels and can display up to 262,144 colors. 6 O'clock direction is the Optimum viewing angle.

### FEATURES

- High contrast ratio, high aperture structure
- 1366 x 768 pixels resolution
- Low power consumption
- Fast Response
- LED BLU with LED driver
- DE(Data enable) only mode
- 3.3V LVDS Interface
- Onboard EEDID chip
- Pb-free product

### APPLICATIONS

- Notebook PC
- If the usage of this product is not for PC application, but for others, please contact SEC.

## GENERAL INFORMATION

Item	Specification	Unit	Note
Display area	309.399(H) x 173.952(V) (14.0" diagonal )	mm	
Driver element	a-Si TFT active matrix		
Display colors	262,144		
Number of pixel	1366 x RGB(3) x 768	pixel	16 : 9
Pixel arrangement	RGB vertical stripe		
Pixel pitch	0.2265(H) x 0.2265(V) (TYP.)	mm	
Display Mode	Normally white		
Surface treatment	Haze 0%, Hard-Coating 3H		

**Samsung Secret**

## Mechanical Information

Item		Min.	Typ.	Max.	Unit	Note
Module size	Horizontal (H)	323.0	323.5	324	mm	(1)
	Vertical (V)	191.5	192.0	192.5	mm	
	Depth (D)	-	-	5.2	mm	
Weight		-	-	350	g	

Note (1) Measurement condition of outline dimension  
. Equipment : Micrometer

## 1. ABSOLUTE MAXIMUM RATINGS

### 1.1 ENVIRONMENTAL ABSOLUTE RATINGS

Item	Symbol	Min.	Max.	Unit	Note
Storage temperate	T <sub>STG</sub>	-20	60	°C	(1)
Operating temperate (Temperature of glass surface)	T <sub>OPR</sub>	0	50	°C	(1)
Shock ( non-operating )	Snop	-	210	G	(2),(5)
			50		(3),(5)
Vibration (non-operating)	Vnop	-	2.41	G	(4),(5)
Altitude ( operation )	-	-	10,000	feet	
Altitude ( storage )	-	-	40,000	feet	

Note (1) Temperature and relative humidity range are shown in the figure below.

95 % RH Max. ( 40 °C > Ta)

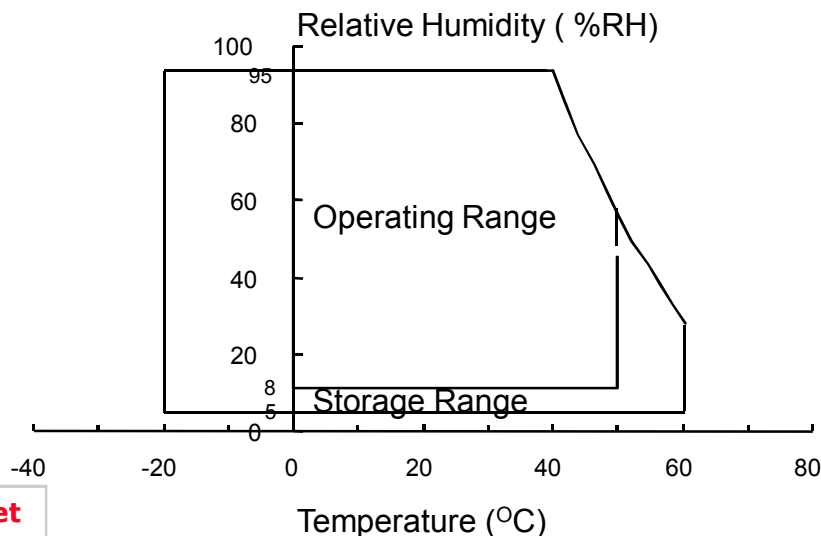
Maximum wet - bulb temperature at 39 °C or less. (Ta ≥ 40 °C) No condensation.

(2) 2ms, half sine wave, one time for ±X, ±Y, ±Z.

(3) 11ms, Trapezoidal wave, one time for ±X, ±Y, ±Z.

(4) 5~500 Hz, Random vibration, 30 min for X,Y,Z.

(5) At testing Vibration and Shock, the fixture in holding the Module to be tested have to be hard and rigid enough so that the Module would not be twisted or bent by the fixture.



**Samsung Secret**

## 1.2 ELECTRICAL ABSOLUTE RATINGS

## (1) TFT LCD MODULE

 $V_{DD} = 3.3V, V_{SS} = GND = 0V$ 

Item	Symbol	Min.	Max.	Unit	Note
Power Supply Voltage	$V_{DD}$	$V_{DD} - 0.3$	$V_{DD} + 0.3$	V	(1)
Logic Input Voltage	$V_{IN}$	$V_{DD} - 0.3$	$V_{DD} + 0.3$	V	(1)

Note (1) Within  $T_a$  ( $25 \pm 2$  °C )

## 2. OPTICAL CHARACTERISTICS

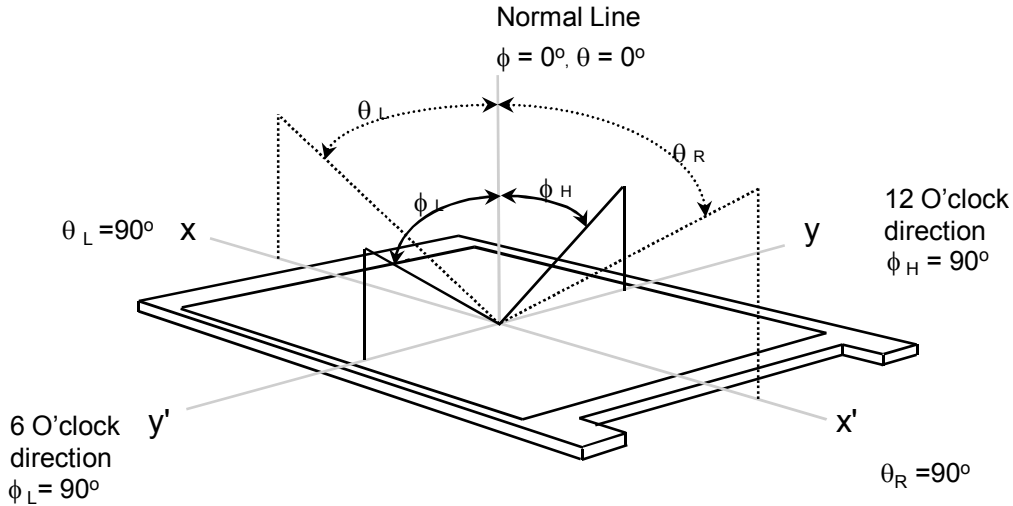
The following items are measured under stable conditions. The optical characteristics should be measured in a dark room or equivalent state with the methods shown in Note (5).  
Measuring equipment : TOPCON SR-3

\* Ta = 25 ± 2 °C, V<sub>DD</sub>=3.3V, fv=60Hz, f<sub>DCLK</sub> = 75.17MHz, IL = 23 mArms

Item	Symbol	Condition	Min.	Typ.	Max	Unit	Note	
Contrast Ratio (5 Points)	CR		-	500	-	-	(1), (2), (5)	
Response Time at Ta ( Rising + Falling )	T <sub>RT,B/W</sub>		-	16	25	msec	(1), (3)	
Average Luminance of White (5 Points)	Y <sub>L,AVE</sub>		170	200	-	cd/m <sup>2</sup>	I <sub>L</sub> =23mA (1), (4)	
Color Chromaticity ( CIE )	Red	R <sub>x</sub>	Normal Viewing Angle φ = 0 θ = 0	0.555	0.585	0.615	-	(1), (5) SR-3
		R <sub>y</sub>		0.325	0.355	0.385		
	Green	G <sub>x</sub>		0.320	0.350	0.380		
		G <sub>y</sub>		0.550	0.580	0.610		
	Blue	B <sub>x</sub>		0.135	0.165	0.195		
		B <sub>y</sub>		0.095	0.125	0.155		
	White	W <sub>x</sub>		0.283	0.313	0.343		
		W <sub>y</sub>		0.299	0.329	0.359		
Viewing Angle	Hor.	θ <sub>L</sub>	CR ≥ 10	-	45	-	Degrees	(1), (5) SR-3
		θ <sub>R</sub>		-	45	-		
	Ver.	φ <sub>H</sub>		-	15	-		
		φ <sub>L</sub>		-	30	-		
Color Gamut	CG		-	45	-	%		
13 Points White Variation	δ <sub>L</sub>		60%	-	-	-	(6)	
5 Points White Variation	δ <sub>L</sub>		80%	-	-	-	(6)	

**Samsung Secret**

Note 1) Definition of Viewing Angle : Viewing angle range(  $10 \leq C/R, 100 \leq C/R$  )

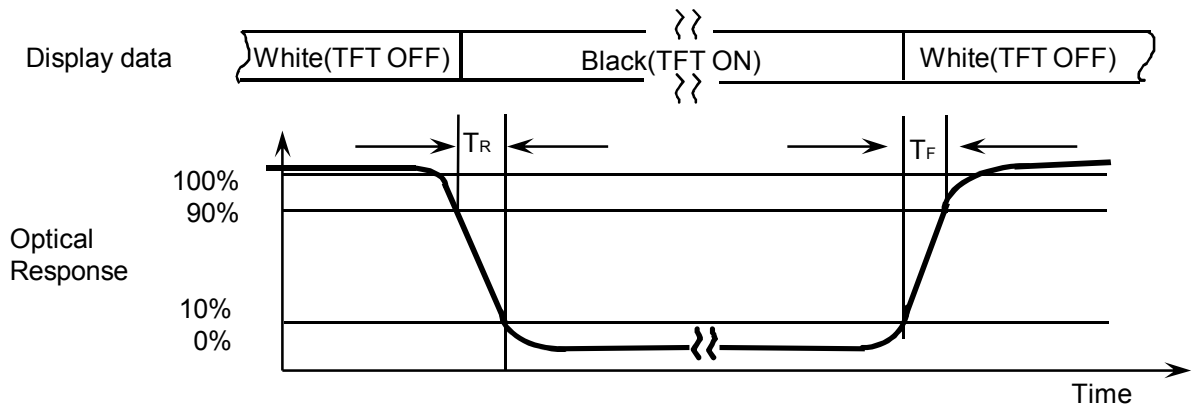


Note 2) Definition of Contrast Ratio (CR) : Ratio of gray max (Gmax), gray min (Gmin) at 5 points(4, 5, 7, 9, 10)

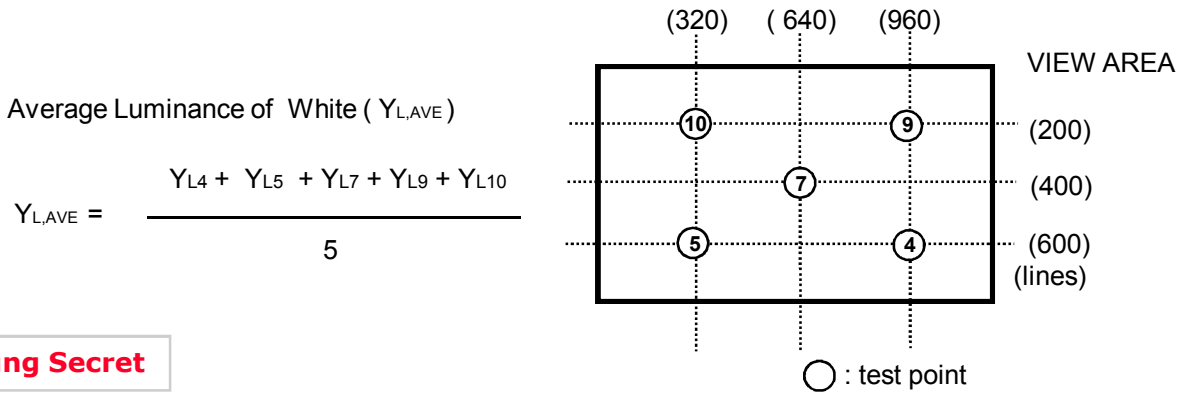
$$CR = \frac{CR(4) + CR(5) + CR(7) + CR(9) + CR(10)}{5}$$

Points : (4), (5), (7), (9), (10) at the figure of Note (6).

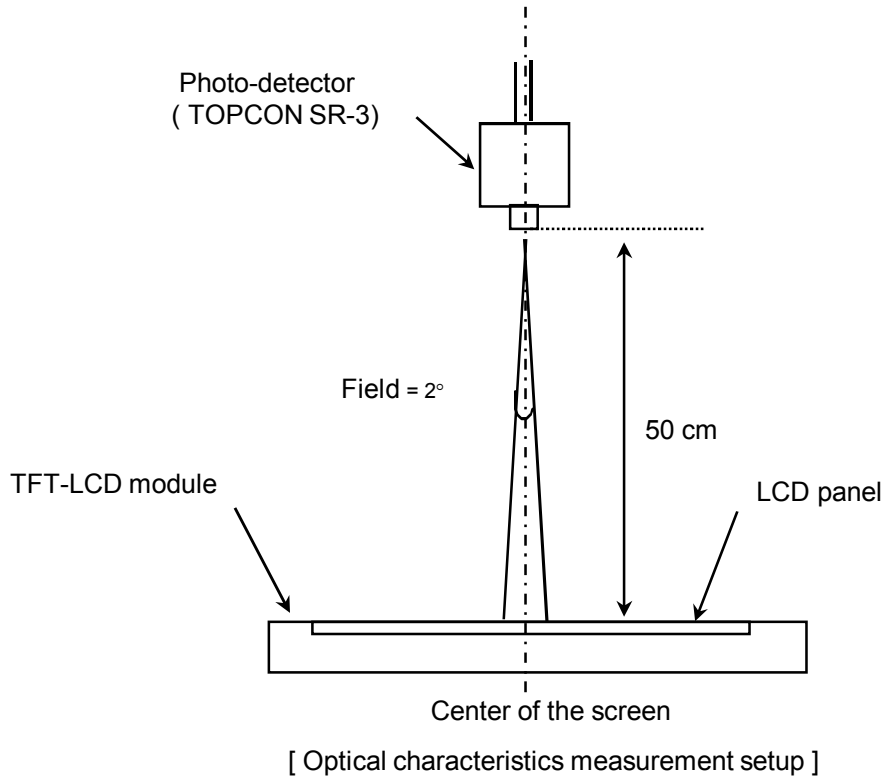
Note 3) Definition of Response time :



Note 4) Definition of Average Luminance of White : measure the luminance of white at 5 points.

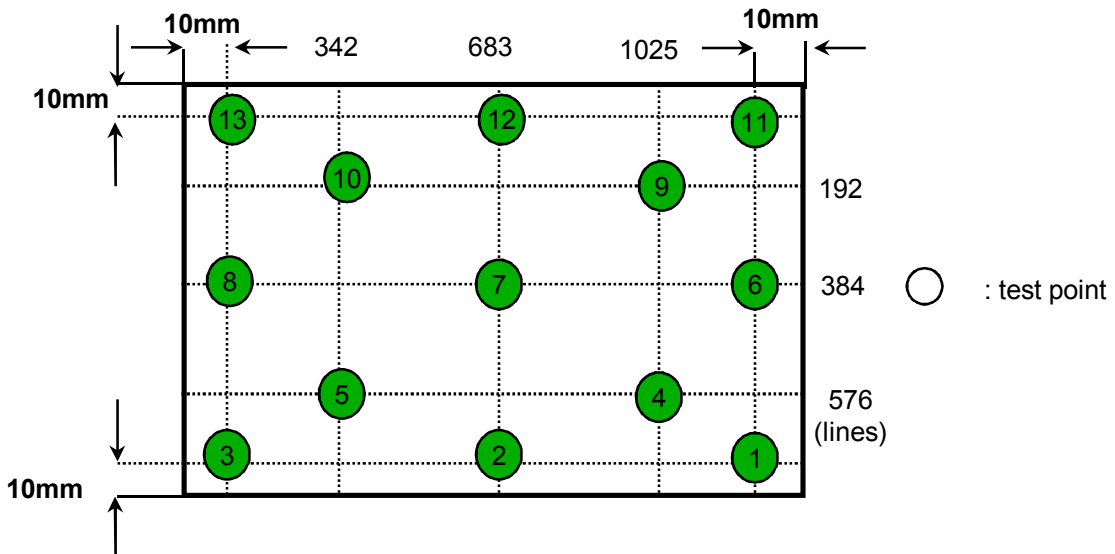


Note 5) After stabilizing and leaving the panel alone at a given temperature for 30 min , the measurement should be executed. Measurement should be executed in a stable, windless, and dark room. 30 min after lighting the backlight. This should be measured in the center of screen.  
 Environment condition :  $T_a = 25 \pm 2 \text{ }^\circ\text{C}$



Note 6) Definition of 13 points white variation ( $\delta L$ ), CR variation ( $C_{VER}$ ) [ ① ~ ⑬ ]

$$\delta L = \frac{\text{Maximum luminance of 13 points}}{\text{Minimum luminance of 13 points}}$$



**Samsung Secret**

### 3. ELECTRICAL CHARACTERISTICS

Approval

#### 3.1 TFT LCD MODULE

Ta= 25 ± 2°C

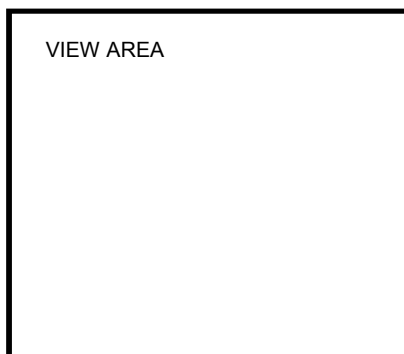
Item		Symbol	Min.	Typ.	Max.	Unit	Note	
Voltage of Power Supply		V <sub>DD</sub>	3.0	3.3	3.6	V		
Differential Input Voltage for LVDS Receiver Threshold		High	V <sub>IH</sub>	-	-	+100	mV	V <sub>CM</sub> = +1.2V
		Low	V <sub>IL</sub>	-100	-	-	mV	
Vsync Frequency	60Hz	Hsync Freq	F <sub>H</sub>	-	47.4	-	KHz	
		Main Freq	F <sub>DCLK</sub>	-	75.17	-	MHz	
	50Hz	Hsync Freq	F <sub>H</sub>	-	39.5	-	KHz	
		Main Freq	F <sub>DCLK</sub>	-	62.65	-	MHz	
	40Hz	Hsync Freq	F <sub>H</sub>	-	31.6	-	KHz	
		Main Freq	F <sub>DCLK</sub>	-	50.12	-	MHz	
Rush Current		I <sub>RUSH</sub>	-	-	1.5	A	(4)	
Current of Power Supply		White	I <sub>DD</sub>	-	210	-	mA	(2),(3)*a
		Mosaic		-	210	240	mA	(2),(3)*b
		WinXP Pattern		-	250	-	mA	(2),(3)*c
		Max Pattern		-	335	350	mA	(2),(3)*d

Note (1) Display data pins and timing signal pins should be connected.( GND = 0V )

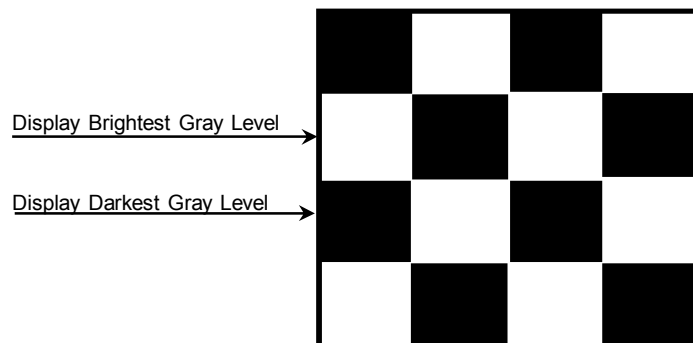
(2) f<sub>v</sub> = 60Hz, f<sub>DCLK</sub> = 75.17MHz, V<sub>DD</sub> = 3.3V , DC Current.

(3) Power dissipation pattern

\*a) White Pattern



\*b) Mosaic Pattern



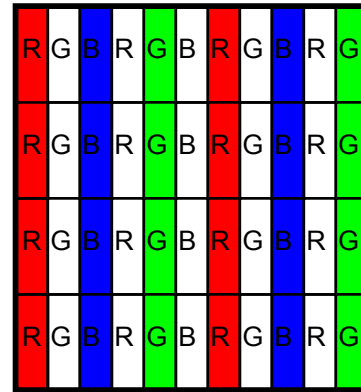
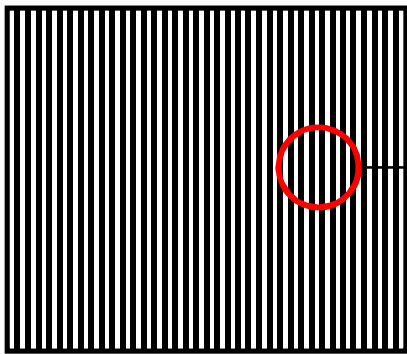
Samsung Secret

\*c) WinXP Pattern

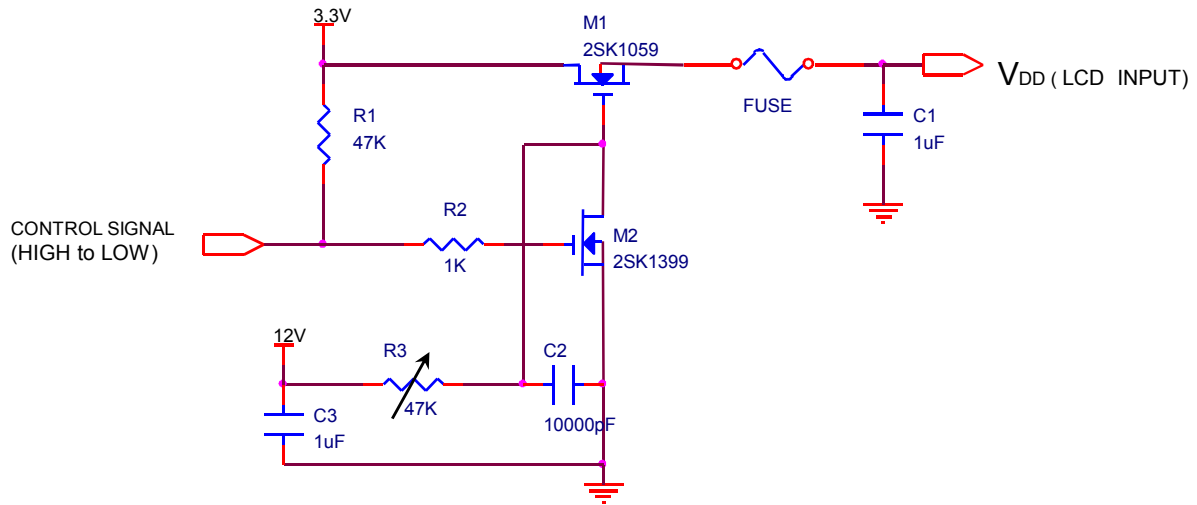
Approval



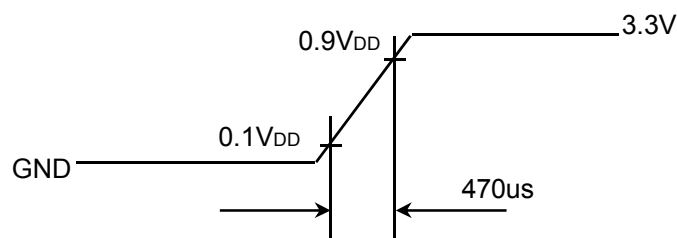
\*d) 1dot Vertical stripe pattern



4) Rush current measurement condition



V<sub>DD</sub> rising time is 470us



**Samsung Secret**

## 3.2 Back light unit

Ta= 25 ± 2 °C

Item	Symbol	Min.	Typ.	Max.	Unit	Note
LED Forward Current	IF	-	23	-	mA	
LED Forward Voltage	VF	3.0	3.2	3.4	V	IF=23mA
LED Array Voltage	VP	-	32	-	V	VF X 10 LEDs
Power Consumption	P	-	2.6	2.8	W	IF X VF X 30LEDs
Operating Life Time	Hr	10,000	-	-	Hr	(1)

Note (1) Life time (Hr) of LEDs can be defined as the time in which it continues to operate under the condition Ta= 25 ± 2 °C and DC = (23) mA until one of the following event occurs.

- When the brightness becomes 50% or lower than the original.

## 3.3 LED Driver

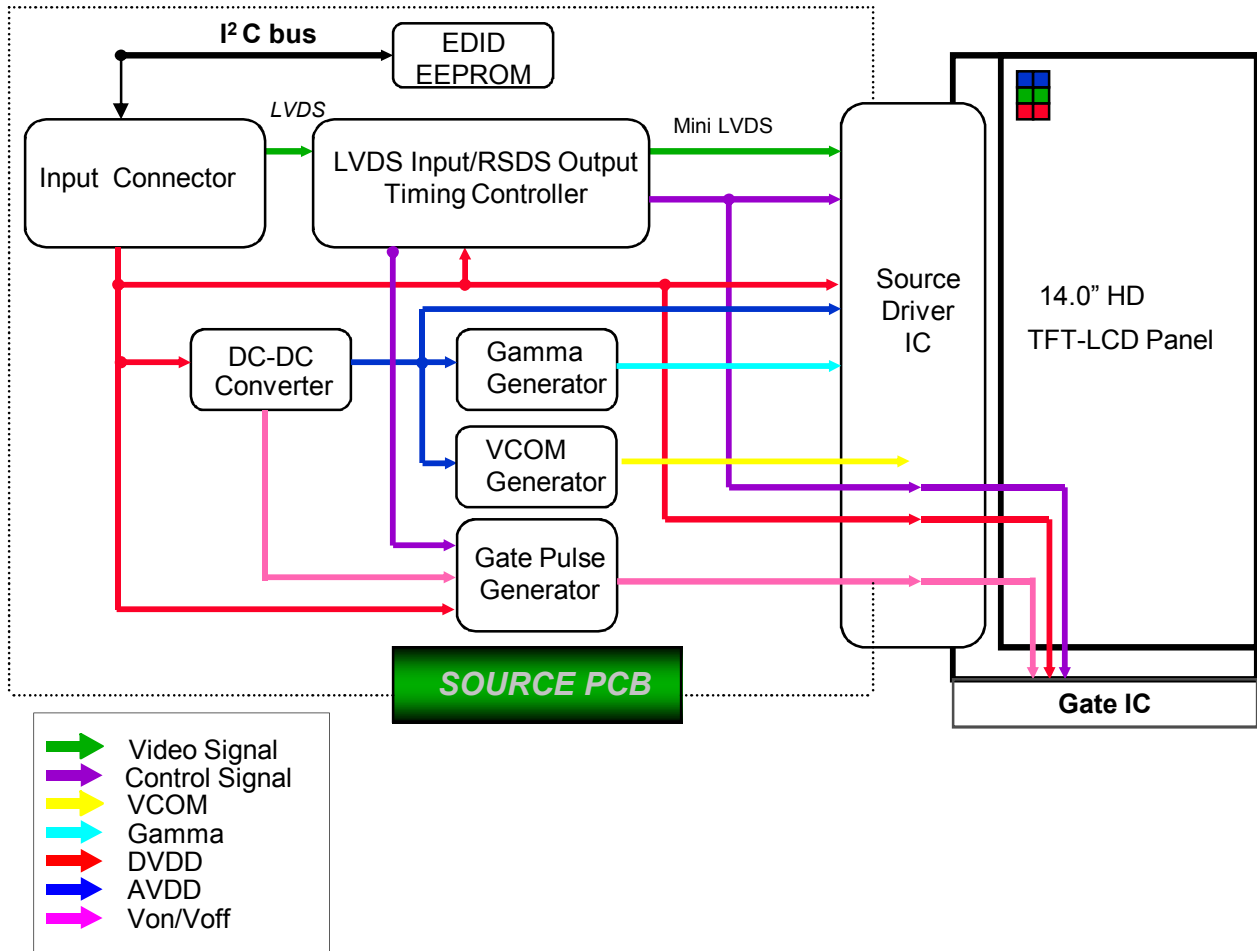
- LED Driver Manufacturer : RICHTEK , LED qty.: 3X 10 = 30 EA

Item	Symbol	Min.	Typ.	Max.	Unit	Note
Input Voltage	V <sub>in</sub>	7	12	21	V	
PWM Duty	D2	1	-	100	%	PWM frequency (0.12~1kHz)
	D2	5	-	100	%	PWM frequency (1~10KHz)
	D2	10	-	100	%	PWM frequency (10~30KHz)
PWM Frequency	F <sub>PWM</sub>	0.1		20	KHz	

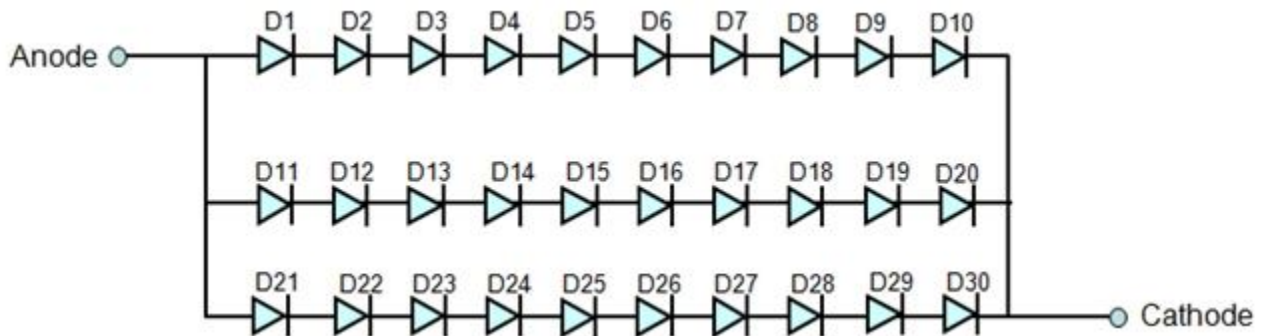
Samsung Secret

## 4. BLOCK DIAGRAM

### 4.1 TFT LCD Module



### 4.2 LED Connection and Placement



**Samsung Secret**

## 5. INPUT TERMINAL PIN ASSIGNMENT

Approval

### 5.1. Input Signal & Power (LVDS, Connector : IPEX 20455-040E )

Pin	Symbol	Function
1	NC	No Connection (Reserved for supplier)
2~3	VDD	Logic power 3.3V (Panel logic, BL logic)
4	VEDID	EDID 3.3V power
5	NC	no connect
6	CLK_EDID	EDID clock
7	DATA_EDID	EDID data
8	RXin0-	- LVDS differential data (R0-R5, G0)
9	RXin0+	+ LVDS differential data (R0-R5, G0)
10	GND	Ground
11	RXin1-	- LVDS differential data (G1-G5, B0-B1)
12	RXn1+	+ LVDS differential data (G1-G5, B0-B1)
13	GND	Ground
14	RXin2-	- LVDS differential data (B2-B5,HS,VS, DE)
15	RXn2+	+ LVDS differential data (B2-B5,HS,VS, DE)
16	GND	Ground
17	CIKIN-	- LVDS differential clock input
18	CIKIN+	+ LVDS differential clock input
19	GND	Ground
20~21	NC	No Connection
22	GND	Ground
23~24	NC	No Connection
25	GND	Ground
26~27	NC	No Connection
28	GND	Ground
29~30	NC	No Connection
31~33	VBL-	LED Ground
34	NC	No Connection
35	S_PWM	System PWM Signal Input
36	LED_EN	BL On/Off (On: 2.0~3.3V, Off: 0~0.8V)
37	NC	no connect
38~40	VBL+	LED Power Supply 7V-21V

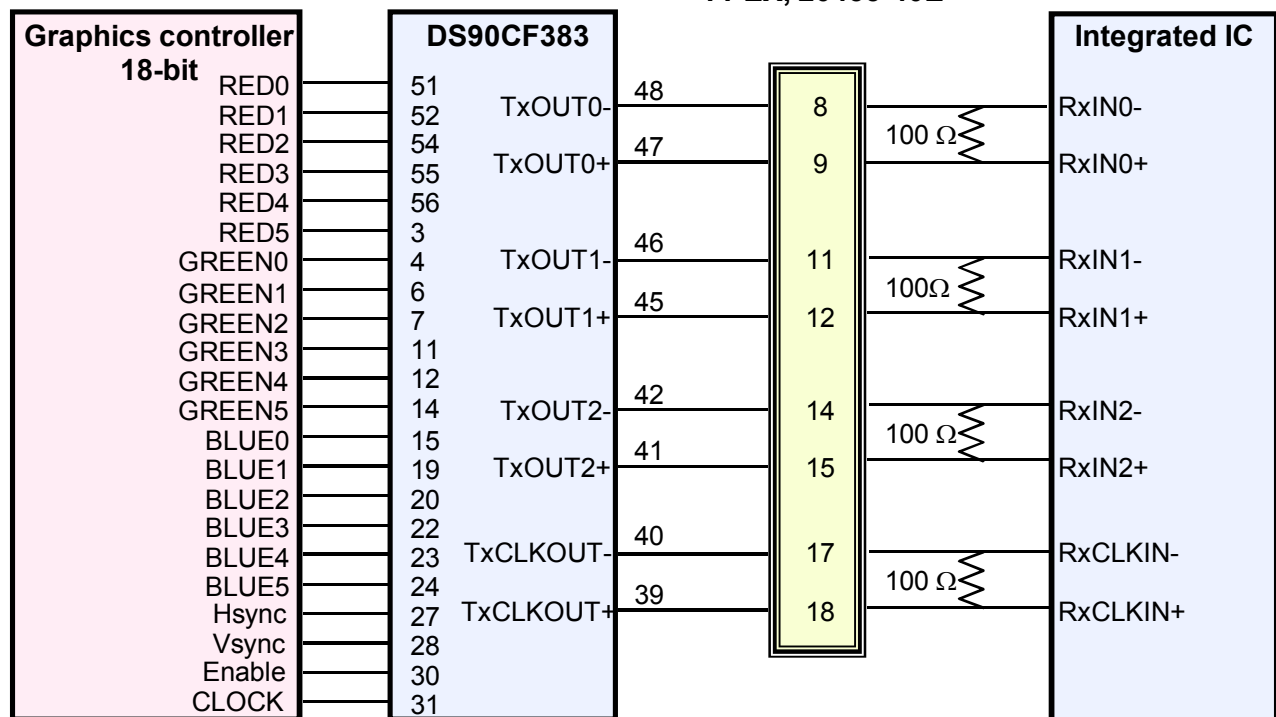
**Samsung Secret**

## 5.2 LVDS Interface

Pin No.	Name	RGB Signal	Pin No.	Name	RGB Signal
51	TxIN0	R0	14	TxIN14	G5
52	TxIN1	R1	15	TxIN15	B0
54	TxIN2	R2	19	TxIN18	B1
55	TxIN3	R3	20	TxIN19	B2
56	TxIN4	R4	22	TxIN20	B3
3	TxIN6	R5	23	TxIN21	B4
4	TxIN7	G0	24	TxIN22	B5
6	TxIN8	G1	27	TxIN24	Hsync
7	TxIN9	G2	28	TxIN25	Vsync
11	TxIN12	G3	30	TxIN26	DE
12	TxIN13	G4	31	TxCLKIN	Clock

### LVDS Interface

I-PEX, 20455-40E

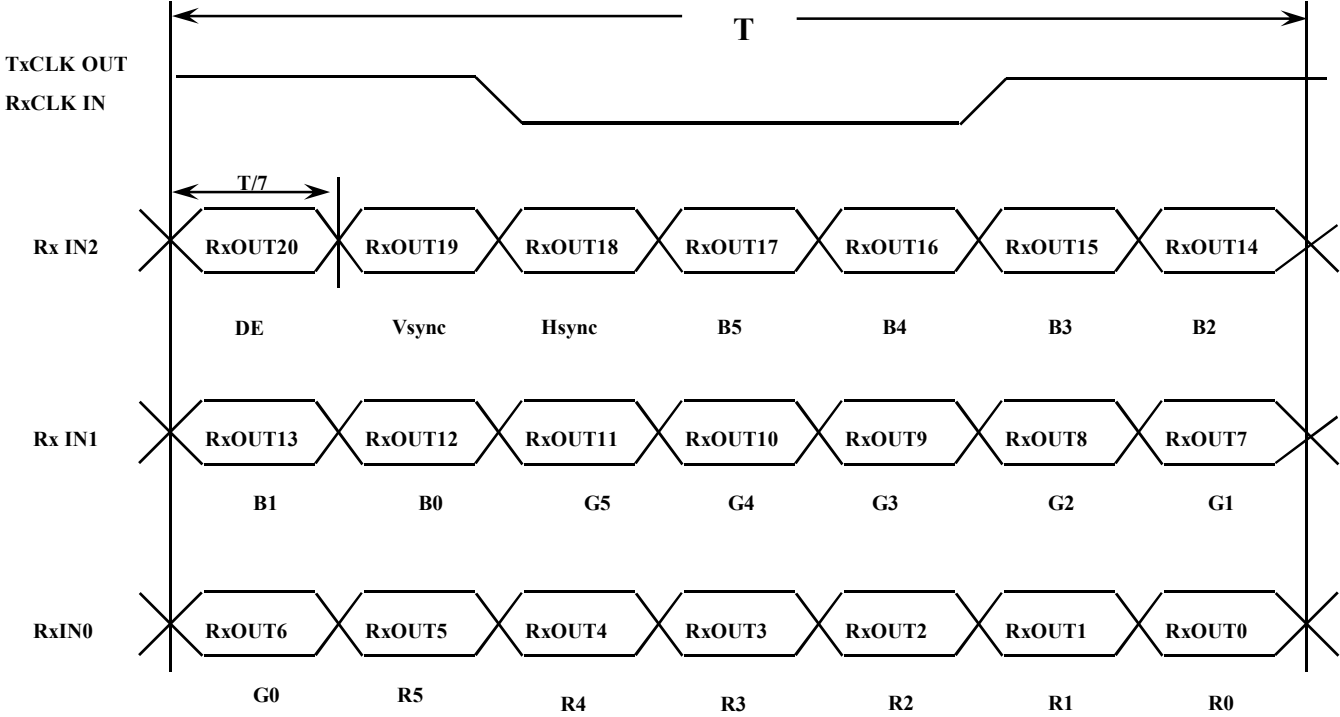


Note : The LCD Module uses a 100ohm resistor between positive and negative lines of each receiver input.

**Samsung Secret**

### 5.3 Timing Diagrams of LVDS For Transmission

LVDS Receiver : Integrated T-CON



Samsung Secret

### 5.5 Input Signals, Basic Display Colors and Gray Scale of Each Color

Color	Display	Data Signal																Gray Scale Level	
		Red					Green					Blue							
		R0	R1	R2	R3	R4	R5	G0	G1	G2	G3	G4	G5	B0	B1	B2	B3		B4
Basic Colors	Black	0	0	0	0	0	0	0	0	0	0	0	0	0	0	0	0	0	-
	Blue	0	0	0	0	0	0	0	0	0	0	0	1	1	1	1	1	1	-
	Green	0	0	0	0	0	0	1	1	1	1	1	1	0	0	0	0	0	-
	Cyan	0	0	0	0	0	0	1	1	1	1	1	1	1	1	1	1	1	-
	Red	1	1	1	1	1	1	0	0	0	0	0	0	0	0	0	0	0	-
	Magenta	1	1	1	1	1	1	0	0	0	0	0	0	1	1	1	1	1	-
	Yellow	1	1	1	1	1	1	1	1	1	1	1	1	0	0	0	0	0	-
	White	1	1	1	1	1	1	1	1	1	1	1	1	1	1	1	1	1	-
Gray Scale Of Red	Black	0	0	0	0	0	0	0	0	0	0	0	0	0	0	0	0	0	R0
	Dark	1	0	0	0	0	0	0	0	0	0	0	0	0	0	0	0	0	R1
	↑	0	1	0	0	0	0	0	0	0	0	0	0	0	0	0	0	0	R2
	:	:	:	:	:	:	:	:	:	:	:	:	:	:	:	:	:	:	R3~R60
	:	:	:	:	:	:	:	:	:	:	:	:	:	:	:	:	:	:	
	↓	1	0	1	1	1	1	0	0	0	0	0	0	0	0	0	0	0	R61
	Light	0	1	1	1	1	1	0	0	0	0	0	0	0	0	0	0	0	R62
	Red	1	1	1	1	1	1	0	0	0	0	0	0	0	0	0	0	0	R63
Gray Scale Of Green	Black	0	0	0	0	0	0	0	0	0	0	0	0	0	0	0	0	0	G0
	Dark	0	0	0	0	0	0	1	0	0	0	0	0	0	0	0	0	0	G1
	↑	0	0	0	0	0	0	0	1	0	0	0	0	0	0	0	0	0	G2
	:	:	:	:	:	:	:	:	:	:	:	:	:	:	:	:	:	:	G3~G60
	:	:	:	:	:	:	:	:	:	:	:	:	:	:	:	:	:	:	
	↓	0	0	0	0	0	0	1	0	1	1	1	1	0	0	0	0	0	G61
	Light	0	0	0	0	0	0	0	1	1	1	1	1	0	0	0	0	0	G62
	Green	0	0	0	0	0	0	1	1	1	1	1	1	0	0	0	0	0	G63
Gray Scale Of Blue	Black	0	0	0	0	0	0	0	0	0	0	0	0	0	0	0	0	0	B0
	Dark	0	0	0	0	0	0	0	0	0	0	0	1	0	0	0	0	0	B1
	↑	0	0	0	0	0	0	0	0	0	0	0	0	1	0	0	0	0	B2
	:	:	:	:	:	:	:	:	:	:	:	:	:	:	:	:	:	:	B3~B60
	:	:	:	:	:	:	:	:	:	:	:	:	:	:	:	:	:	:	
	↓	0	0	0	0	0	0	0	0	0	0	0	0	1	0	1	1	1	B61
	Light	0	0	0	0	0	0	0	0	0	0	0	0	0	1	1	1	1	B62
	Blue	0	0	0	0	0	0	0	0	0	0	0	0	1	1	1	1	1	B63

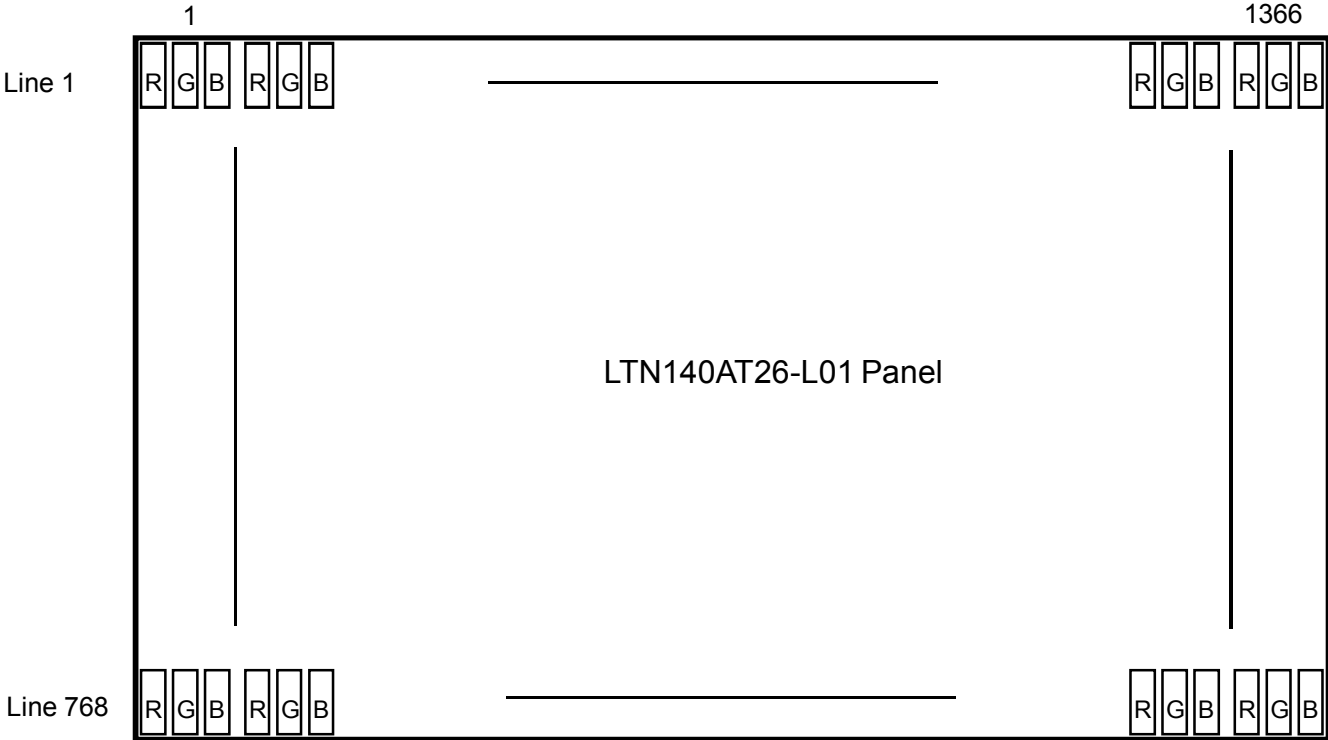
Note 1) Definition of gray :

Rn: Red gray, Gn: Green gray, Bn: Blue gray (n=gray level)

Note 2) Input signal: 0 =Low level voltage, 1=High level voltage

Samsung Secret

5.6 Pixel Format in the display



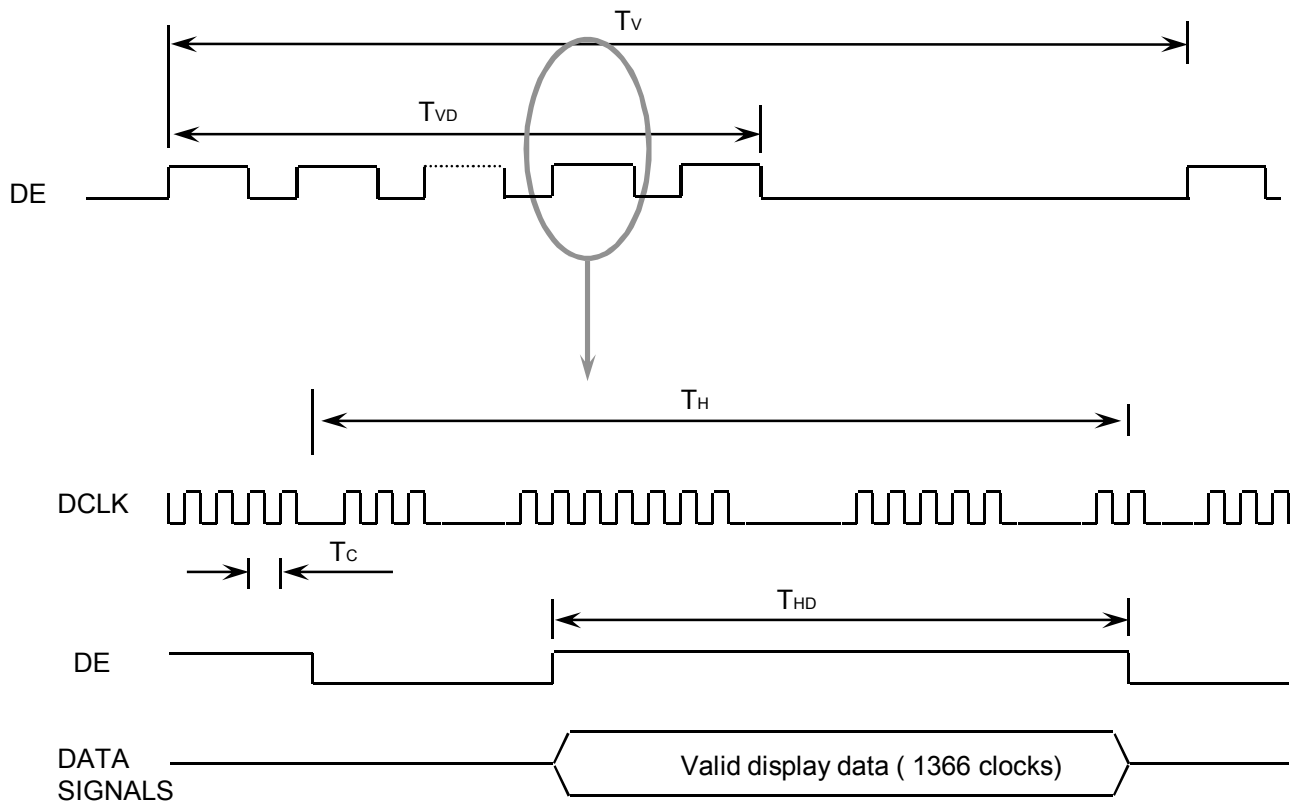
**Samsung Secret**

## 6. INTERFACE TIMING

### 6.1 Timing Parameters

Signal	Item	Symbol	Min.	Typ.	Max.	Unit	Note
Frame Frequency	Cycle	$T_V$	780	790	980	Lines	
Vertical Active Display Term	Display Period	$T_{VD}$	-	768	-	Lines	
One Line Scanning Time	Cycle	$T_H$	1440	1586	1800	Clocks	
Horizontal Active Display Term	Display Period	$T_{HD}$	-	1366	-	Clocks	

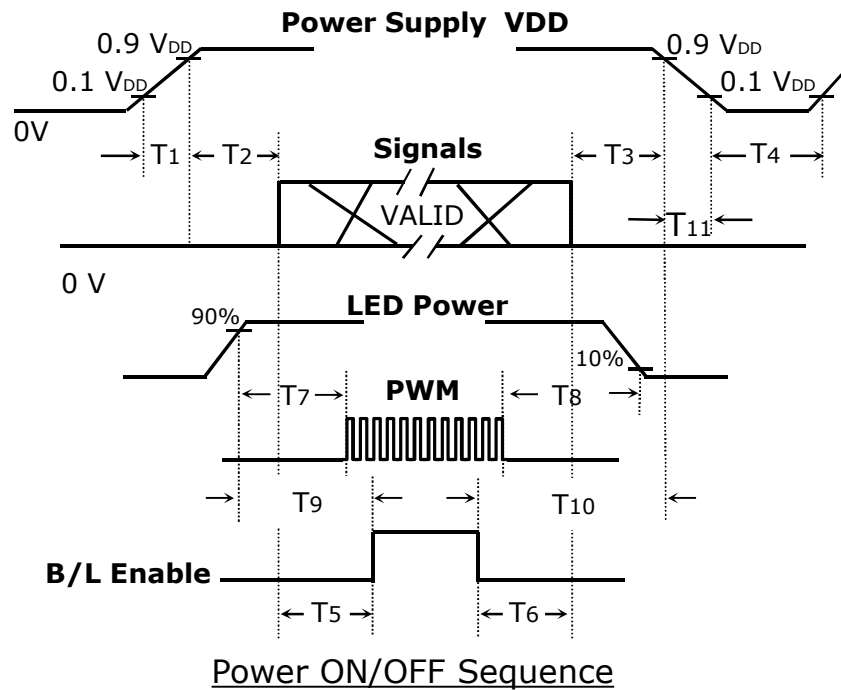
### 6.2 Timing diagrams of interface signal



**Samsung Secret**

### 6.3 Power ON/OFF Sequence

: To prevent a latch-up or DC operation of the LCD module, the power on/off sequence should be as the diagram below.



Timing (ms)	Remarks
$0.5 < T_1 \leq 10$	V <sub>DD</sub> rising time from 10% to 90%
$0 < T_2 \leq 50$	Delay from V <sub>DD</sub> to valid data at power ON
$0 < T_3$	Delay from valid data OFF to V <sub>DD</sub> off at power OFF
$150 \leq T_4$	V <sub>DD</sub> OFF time for Windows restart
$200 \leq T_5$	Delay from valid data to B/L enable at power ON
$0 < T_6$	Delay from valid data off to B/L disable at power OFF
$0 < T_7$	Delay from LED driver power ON to PWM ON
$0 < T_8$	Delay from PWM OFF to LED driver power OFF
$0 < T_9$	Delay from VBL on to B/L Enable ON
$0 < T_{10}$	Delay from B/L Enable Off to VBL OFF
$0 < T_{11} \leq 10$	VBL falling time from 90% to 10%

#### NOTE.

- (1) The supply voltage of the external system for the module input should be the same as the definition of V<sub>DD</sub>.
- (2) In case of V<sub>DD</sub> = off level, please keep the level of input signals on the low or keep a high impedance.
- (3) T<sub>4</sub> should be measured after the module has been fully discharged between power off and on period.
- (4) Interface signal shall not be kept at high impedance when the power is on.

**Samsung Secret**

## 7. Mechanical Outline Dimension

Approval

[ Refer to the next page ]

**Samsung Secret**

**Doc.No.**

LTN140AT26-L01

**Rev.No**

04-A03-G-120220

**Page**

21 / 31

*This page will be replaced with the outline drawing after producing PDF file.*

**Samsung Secret**

## 8. PACKING

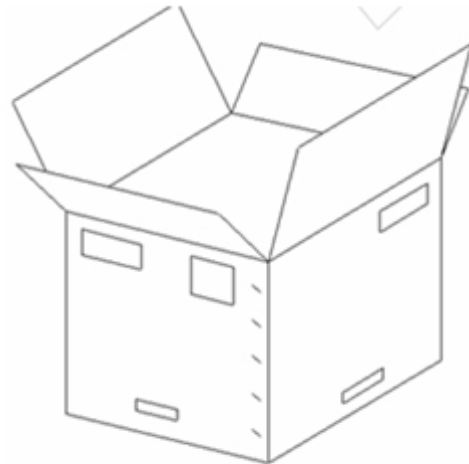
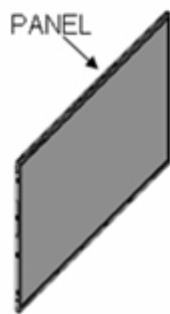
Approval

### 1. CARTON(Internal Package)

#### (1) Packing Form

Corrugated Cardboard box and paper cushion as shock absorber

#### (2) Packing Method



PACKING CASE



Note 1) Total Weight : Approximately (11.5)kg

2) Acceptance number of piling : 6 sets

3) Carton size : 375.5(W) x 375(D) x 246 (H)

**Samsung Secret**

## (3) Packing Material

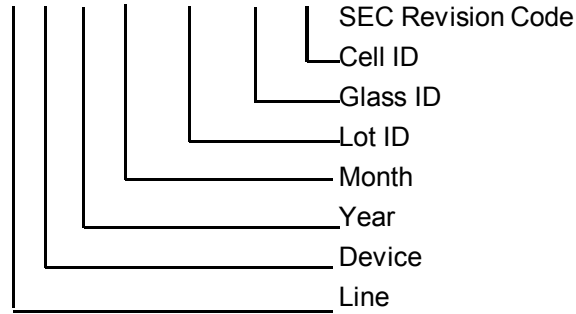
No	Part name	Quantity
1	Static electric protective sack	30 EA
2	Packing case (Inner box) included shock absorber	1 set
3	Pictorial marking	2
4	Carton	1 set

**Samsung Secret**

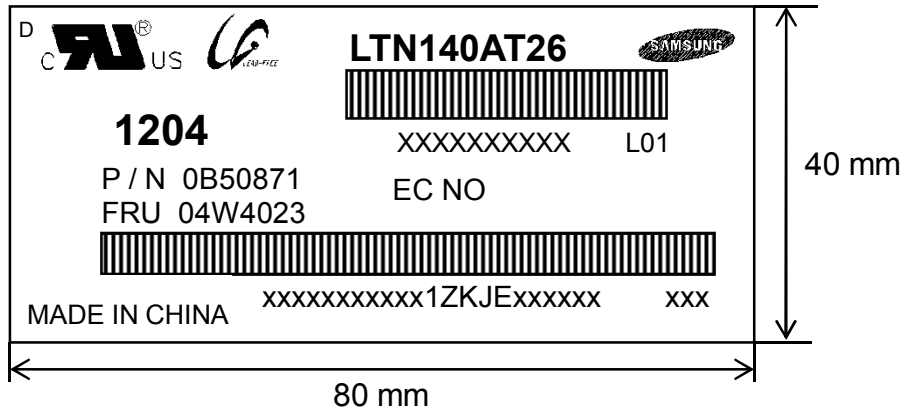
### 9. Product Markings and Others

A nameplate bearing followed by is affixed to a shipped product at the specified location on each product.

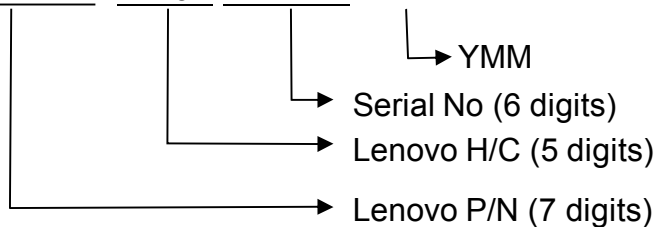
- (1) Parts number : LTN140AT26-L01
- (2) Revision : Three letters
- (3) Control code : One letter
- (4) Lot number : X X X X XXX XX X XXX



#### (5) Product Label Definition - SESL

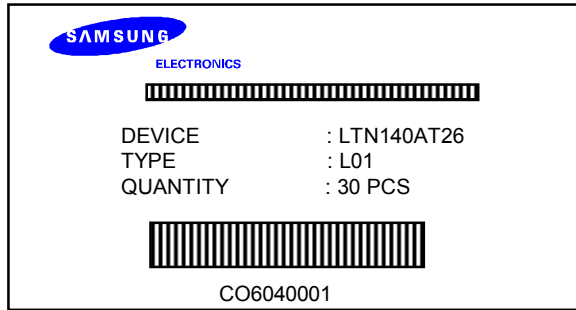


- TFT-LCD Product name : LTN140AT26
- USP code : XXXXXXXXXXXXXXXX
- Lot number : XXXXXXXXXXXXX
- Revision Code : L01
- Inspected work week : 1204 (2012 Year, the 04<sup>th</sup> week)
- P/N : 0B50871
- EC NO : -
- FRU : 04W4023
- Header Code : 1ZKJE
- Lenovo Barcode : 11SXXXXXXXX1ZKJE XXXXXX XXX



**Samsung Secret**

(6) Packing small box attach



**Samsung Secret**

## 10. GENERAL PRECAUTIONS

### 1. Handling

- (a) When the module is assembled, It should be attached to the system firmly using every mounting holes. Be careful not to twist and bend the modules.
- (b) Refrain from strong mechanical shock and / or any force to the module. In addition to damage, this may cause improper operation or damage to the module and back-light.
- (c) Note that polarizers are very fragile and could be easily damaged. Do not press or scratch the surface harder than a HB pencil lead.
- (d) Wipe off water droplets or oil immediately. If you leave the droplets for a long time, Staining and discoloration may occur.
- (e) If the surface of the polarizer is dirty, clean it using some absorbent cotton or soft cloth.
- (f) The desirable cleaners are water, IPA (Isopropyl Alcohol) or Hexane. Do not use Ketone type materials(ex. Acetone), Ethyl alcohol, Toluene, Ethyl acid or Methyl chloride. It might permanent damage to the polarizer due to chemical reaction.
- (g) If the liquid crystal material leaks from the panel, it should be kept away from the eyes or mouth. In case of contact with hands, legs or clothes, it must be washed away thoroughly with soap.
- (h) Protect the module from static, it may cause damage to the C-MOS Gate Array IC.
- (i) Use fingerstalls with soft gloves in order to keep display clean during the incoming inspection and assembly process.
- (j) Do not disassemble the module.
- (k) Do not pull or fold the lamp wire.
- (l) Do not adjust the variable resistor which is located on the back side.
- (m) Protection film for polarizer on the module shall be slowly peeled off just before use so that the electrostatic charge can be minimized.
- (n) Pins of I/F connector shall not be touched directly with bare hands.

**Samsung Secret**

## 2. STORAGE

- (a) Do not leave the module in high temperature, and high humidity for a long time.  
It is highly recommended to store the module with temperature from 0 to 35 °C and relative humidity of less than 70%.
- (b) Do not store the TFT-LCD module in direct sunlight.
- (c) The module shall be stored in a dark place. It is prohibited to apply sunlight or fluorescent light during the store.

## 3. OPERATION

- (a) Do not connect, disconnect the module in the “ Power On” condition.
- (b) Power supply should always be turned on/off by following item 6.3  
“ Power on/off sequence “.
- (c) Module has high frequency circuits. Sufficient suppression to the electromagnetic interference shall be done by system manufacturers. Grounding and shielding methods may be important to minimize the interference.
- (d) The FPC cable between the LED chips and its converter power supply shall be a minimized length and be connected directly . The longer cable between the back-light and the converter may cause lower luminance of light source (LED).
- (e) The standard limited warranty is only applicable when the module is used for general notebook applications. If used for purposes other than as specified, SEC is not to be held reliable for the defective operations. It is strongly recommended to contact SEC to find out fitness for a particular purpose.

## 4. OTHERS

- (a) Ultra-violet ray filter is necessary for outdoor operation.
- (b) Avoid condensation of water. It may result in improper operation or disconnection of electrode.
- (c) Do not exceed the absolute maximum rating value. ( the supply voltage variation, input voltage variation, variation in part contents and environmental temperature, so on)  
Otherwise the module may be damaged.
- (d) If the module displays the same pattern continuously for a long period of time, it can be the situation when the image “sticks” to the screen.
- (e) This module has its circuitry PCB's on the rear side and should be handled carefully in order not to be stressed.

**Samsung Secret**

# 11. EDID

Approval

Address (HEX)	FUNCTION	Value	BIN	DEC	ASCII or Data	Notes
		HEX				
00	Header	00	00000000	0		EDID Header
01		FF	11111111	255		
02		FF	11111111	255		
03		FF	11111111	255		
04		FF	11111111	255		
05		FF	11111111	255		
06		FF	11111111	255		
07		00	00000000	0		
08	ID Manufacturer Name	4C	01001100	76	S	3 character ID
09		A3	10100011	163	E C	"SEC"
0A	ID Product Code	4C	01001100	76	[L]	#HD LED
0B		45	01000101	69	[E]	
0C	32-bit serial no.	00	00000000	0		
0D		00	00000000	0		
0E		00	00000000	0		
0F		00	00000000	0		
10	Week of manufacture	00	00000000	0		
11	Year of manufacture	15	00010101	21	2011	2011
12	EDID Structure Ver.	01	00000001	1	1	EDID Ver. 1.0
13	EDID revision #	03	00000011	3	3	EDID Rev. 3
14	Video input definition	80	10000000	128		
15	Max H image size	1F	00011111	31	31	31 cm(approx)
16	Max V image size	11	00010001	17	17	17 cm(approx)
17	Display Gamma	78	01111000	120	2.2	Gamma 2.2
18	Feature support	EA	11101010	234		
19	Red/green low bits	87	10000111	135		10000111
1A	Blue/white low bits	F5	11110101	245		11111110
1B	Red x/ high bits	94	10010100	148	0.580	Red x0.580= 10010100
1C	Red y	57	01010111	87	0.340	Red y0.340= 01010111
1D	Green x	4F	01001111	79	0.310	Green x0.310= 01001111
1E	Green y	8C	10001100	140	0.550	Green y0.550= 10001100
1F	Blue x	27	00100111	39	0.155	Blue x0.155= 00100111
20	Blue y	27	00100111	39	0.155	Blue y0.155= 00100111
21	White x	50	01010000	80	0.313	White x0.313= 01010000
22	White y	54	01010100	84	0.329	White y0.329= 01010100
23	Established timing 1	00	00000000	0		
24	Established timing 2	00	00000000	0		
25	Established timing 3	00	00000000	0		

Samsung Secret

26	Standard timing #1	01	00000001	1		not used	
27		01	00000001	1			
28	Standard timing #2	01	00000001	1		not used	
29		01	00000001	1			
2A	Standard timing #3	01	00000001	1		not used	
2B		01	00000001	1			
2C	Standard timing #4	01	00000001	1		not used	
2D		01	00000001	1			
2E	Standard timing #5	01	00000001	1		not used	
2F		01	00000001	1			
30	Standard timing #6	01	00000001	1		not used	
31		01	00000001	1			
32	Standard timing #7	01	00000001	1		not used	
33		01	00000001	1			
34	Standard timing #8	01	00000001	1		not used	
35		01	00000001	1			
36	Detailed timing/monitor descriptor #1	5D	01011101	93	75.17	Main clock= 75.17 MHz (@60Hz)	
37		1D	00011101	29			
38		56	01010110	86	1366	Hor active=683*2 pixels	
39		DC	11011100	220	220	Hor blanking=220pixels	
3A		50	01010000	80		4bit : 4bit	
3B		00	00000000	0	768	Vertical active=768 lines	
3C		16	00010110	22	22	Vertical blanking=22 lines	
3D		30	00110000	48		4bit : 4bit	
3E		30	00110000	48	48	Hor sync. Offset=48 pixels	
3F		20	00100000	32	32	H sync. Width=32 pixels	
40			25	00100101	37	2	V sync. Offset=2 lines
						5	V sync. Width=5 lines
41			00	00000000	0		2bit : 2bit :2bit :2bit
42			35	00110101	53	309	H image size= 309 mm(approx)
43			AE	10101110	174	174	V image size = 174 mm(approx)
44			10	00010000	16		
45		00	00000000	0		No Horizontal Border	
46		00	00000000	0		No Vertical Border	
47		19	00011001	25			
48	Detailed timing/monitor descriptor #2	00	00000000	0		Manufacturer Specified (Timing)	
49		00	00000000	0			
4A		00	00000000	0			
4B		0F	00001111	15			
4C		00	00000000	0			
4D		00	00000000	0		Value=HSPWmin / 2	
4E		00	00000000	0		Value=HSPWmax / 2	
4F		00	00000000	0		Value=Thbpmin / 2	
50		00	00000000	0		Value=Thbpmax / 2	
51		00	00000000	0		Value=VSPWmin / 2	
52		00	00000000	0		Value=VSPWmax / 2	
53		00	00000000	0		Value=Tvbpmin / 2	
54	00	00000000	0		Value=Tvbpmax / 2		
55	25	00100101	37		Thpmin=value*2 + HA pixelclks		
56	D9	11011001	217		Thpmax=value*2 + HA pixelclks		
57	06	00000110	6		Tvpmin=value*2 + VA lines		
58	6A	01101010	106		Tvpmax=value*2 + VA lines		
59	00	00000000	0		Module revision		

**Samsung Secret**

5A	Detailed timing/monitor descriptor #3	00	00000000	0		ASCII Data String Tag
5B		00	00000000	0		
5C		00	00000000	0		
5D		FE	11111110	254		
5E		00	00000000	0		
5F		53	01010011	83	[S]	
60		41	01000001	65	[A]	
61		4D	01001101	77	[M]	
62		53	01010011	83	[S]	
63		55	01010101	85	[U]	
64		4E	01001110	78	[N]	
65		47	01000111	71	[G]	
66		0A	00001010	10	[^]	
67		20	00100000	32	[ ]	
68	4C	01001100	76			
69	A3	10100011	163		supplier ID "SEC"	
6A	41	01000001	65	[A]	Product code "AT"	
6B	54	01010100	84	[T]	(Hex, LSB first)	
6C	Detailed timing/monitor descriptor #4	00	00000000	0		Monitor Name Tag (ASCII)
6D		00	00000000	0		
6E		00	00000000	0		
6F		FE	11111110	254		
70		00	00000000	0		
71		4C	01001100	76	[L]	
72		54	01010100	84	[T]	
73		4E	01001110	78	[N]	
74		31	00110001	49	[1]	
75		34	00110100	52	[4]	
76		30	00110000	48	[0]	
77		41	01000001	65	[A]	
78		54	01010100	84	[T]	
79		32	00110010	50	[2]	
7A	36	00110110	54	[6]		
7B	4C	01001100	76	[L]		
7C	30	00110000	48	[0]		
7D	31	00110001	49	[1]		
7E	Extension Flag	00	00000000	0		
7F	Checksum	E2	11100010	226		

Samsung Secret