

## SWITCHING DIODE

### WBFBP-02C Plastic-Encapsulate Diodes

VOLTAGE 90 Volts CURRENT 0.1 Ampere

#### DESCRIPTION

Silicon Epitaxial Planar

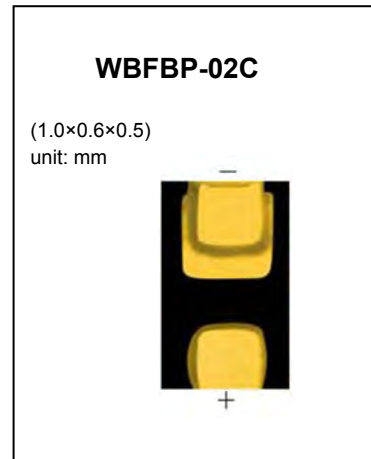
#### FEATURES

- Small Surface Mounting Type
- High Speed
- High Reliability with High Surge Current Handling Capability

#### APPLICATION

High Speed Switching for Detection

For Portable Equipment:(i.e. Mobile Phone,MP3, MD,CD-ROM, DVD-ROM, Note Book PC, etc.)



Moisture Sensitivity Level 1

#### MARKING: 7



Pb-Free package is available

RoHS product for packing code suffix "G"

Halogen free product for packing code suffix "H"

#### Maximum Ratings and Electrical Characteristics, Single Diode @Ta=25°C

| Parameter               | Symbol      | Value    | Unit |
|-------------------------|-------------|----------|------|
| Peak Reverse Voltage    | $V_{RM}$    | 90       | V    |
| DC Reverse Voltage      | $V_R$       | 80       | V    |
| Peak Forward Current    | $I_{FM}$    | 225      | mA   |
| Mean Rectifying Current | $I_o$       | 100      | mA   |
| Surge Current @t=1s     | $I_{surge}$ | 500      | mA   |
| Junction Temperature    | $T_j$       | 150      | °C   |
| Storage Temperature     | $T_{stg}$   | -55~+150 | °C   |

#### Electrical Ratings @Ta=25°C

| Parameter                     | Symbol   | Min | Typ | Max | Unit    | Conditions                        |
|-------------------------------|----------|-----|-----|-----|---------|-----------------------------------|
| Forward voltage               | $V_F$    |     |     | 1.2 | V       | $I_F=100mA$                       |
| Reverse current               | $I_R$    |     |     | 0.1 | $\mu A$ | $V_R=80V$                         |
| Capacitance between terminals | $C_T$    |     |     | 3.0 | pF      | $V_R=0.5V, f=1MHz$                |
| Reverse recovery time         | $t_{rr}$ |     |     | 4   | ns      | $V_R=6V, I_F=10mA, R_L=100\Omega$ |

**RATING CHARACTERISTIC CURVES ( 1SS400WB )**

FIG. 1 - SURGE CURRENT CHARACTERISTICS

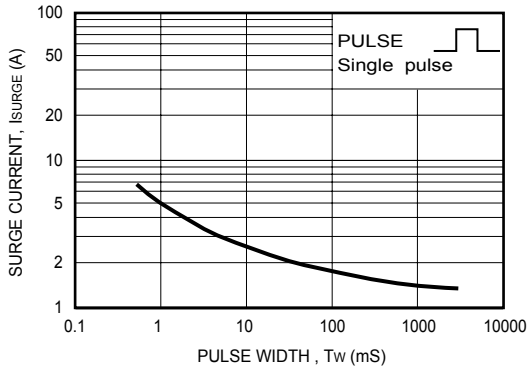


FIG. 2 - FORWARD CHARACTERISTICS

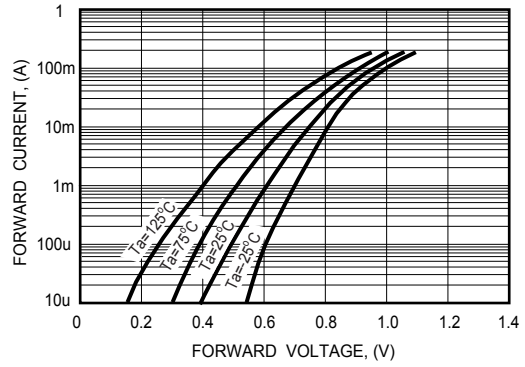


FIG. 3 - TYPICAL JUNCTION CAPACITANCE

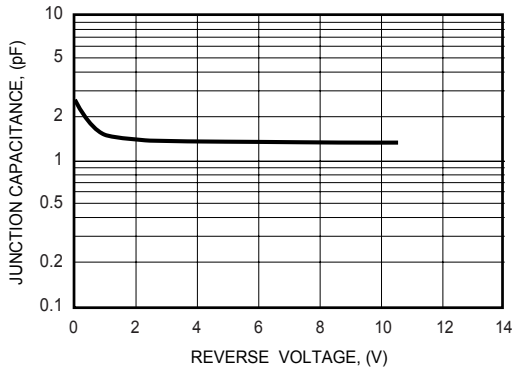


FIG. 4 - REVERSE CHARACTERISTICS

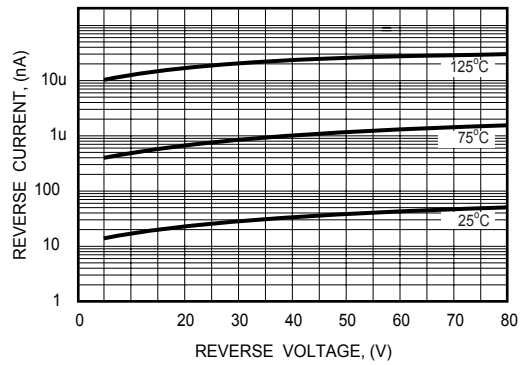


FIG. 5 - REVERSE RECOVERY TIME

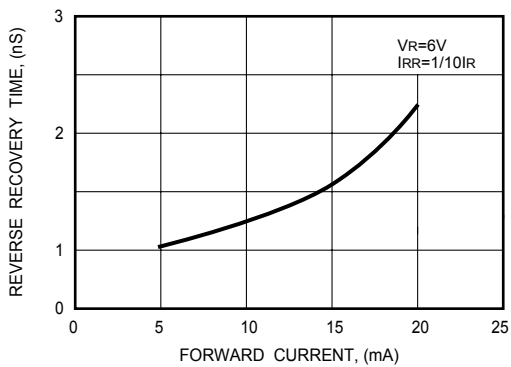
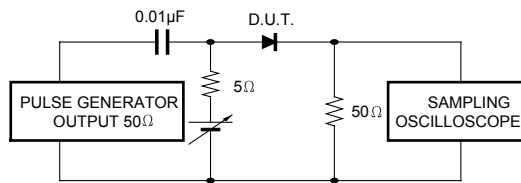


FIG. 6 - REVERSE RECOVERY TIME MEASUREMENT CIRCUIT





### Ordering Information:

| Device PN                                      | Packing                 |
|--|-------------------------|
| 1SS400WB-T <sup>(1)</sup> G <sup>(2)</sup> -WS | Tape&Reel: 10 Kpcs/Reel |

Note: (1) Packing code, Tape&Reel Packing

(2) RoHS product for packing code suffix "G" ; Halogen free product for packing code suffix "H"

### \*\*\*Disclaimer\*\*\*

WILLAS reserves the right to make changes without notice to any product specification herein, to make corrections, modifications, enhancements or other changes. WILLAS or anyone on its behalf assumes no responsibility or liability for any errors or inaccuracies. Data sheet specifications and its information contained are intended to provide a product description only. "Typical" parameters which may be included on WILLAS data sheets and/ or specifications can and do vary in different applications and actual performance may vary over time. WILLAS does not assume any liability arising out of the application or use of any product or circuit.

WILLAS products are not designed, intended or authorized for use in medical, life-saving implant or other applications intended for life-sustaining or other related applications where a failure or malfunction of component or circuitry may directly or indirectly cause injury or threaten a life without expressed written approval of WILLAS. Customers using or selling WILLAS components for use in such applications do so at their own risk and shall agree to fully indemnify WILLAS Inc and its subsidiaries harmless against all claims, damages and expenditures.